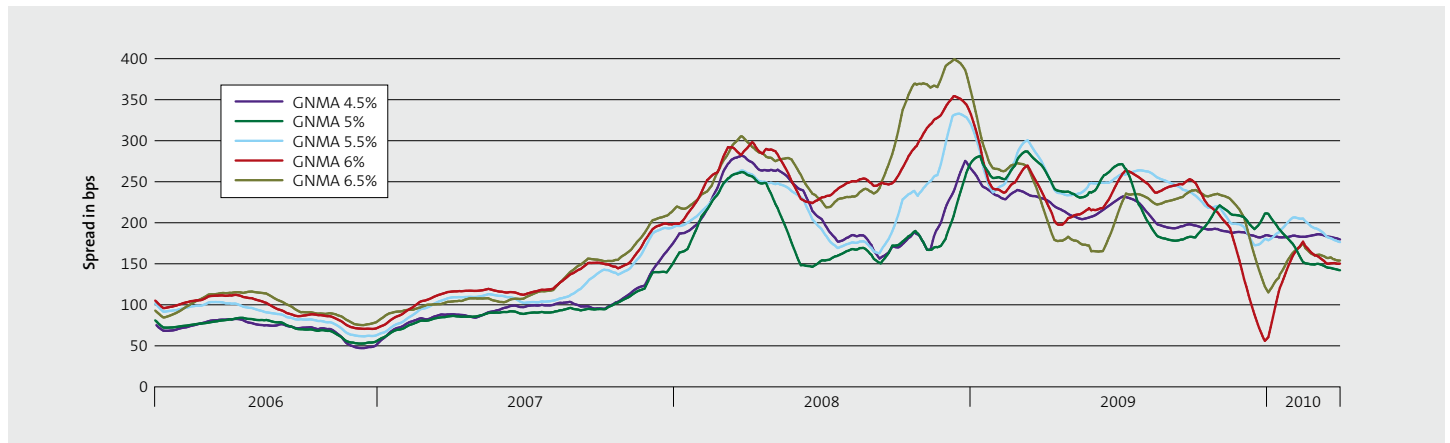


**THE HIGHEST DEGREE OF ACCURACY IN DELIVERING THE MOST OBJECTIVE AND COMPREHENSIVE PRICE DISCOVERY FOR U.S. TBA MORTGAGE-BACKED PASS-THROUGH SECURITIES. MORTGAGEMARKER PROVIDES REAL-TIME INDICATIVE PRICING ON THE MOST ACTIVELY TRADED TBA MORTGAGE-BACKED PASS-THROUGH SECURITIES, SPANNING 15-YEAR, 20-YEAR AND 30-YEAR FIXED-RATES WITHIN THE GINNIE MAE (GNMA), FREDDIE MAC (GOLD) AND FANNIE MAE (FNMA) SECTORS.**



GNMA Benchmarks Spread to Treasury March 2006–March 2010

- ➔ Each sector covers a wide coupon range and goes out 2 to 4 months.
- ➔ Prices are accountable and reflective of Tullett Prebon's leading position within the primary inter-dealer market.
- ➔ MortgageMarker objectively addresses TBA prices with up-to-the-moment updates on over 270 issues in full view of Treasury benchmarks, facilitating quick recognition of market dislocations, sector trends and relative value.
- ➔ Prices are accountable and reflective of Tullett Prebon's leading position within the primary inter-dealer market.

GNMA			GOLD			FNMA					
CPN	MTH	CHG	CPN	MTH	CHG	CPN	MTH	CHG			
4	AP	97.270/280	0.000	4	AP	97.010/020	0.000	4	AP	97.060/070	0.000
4	MY	97.160/170	0.000	4	MY	96.220/230	0.000	4	MY	96.270/280	0.000
4.5	AP	101.110/120	0.000	4.5	AP	100.140/150	0.000	4.5	AP	100.140/150	0.000
4.5	MY	100.310/000	0.000	4.5	MY	100.050/060	0.000	4.5	MY	100.030/040	0.000
5	AP	104.030/040	0.000	5	AP	103.140/150	0.000	5	AP	103.110/120	0.000
5	MY	103.220/230	0.000	5	MY	103.070/080	0.000	5	MY	102.300/310	0.000
5.5	AP	105.290/300	0.000	5.5	AP	105.250/260	0.000	5.5	AP	105.140/150	0.000
6	AP	107.000/010	0.000	6	AP	107.120/130	0.000	6	AP	106.120/130	0.000
CPN	MTH	CHG	CPN	MTH	CHG	CPN	MTH	CHG			
4	AP	102.150/160	0.000	4	AP	101.170/180	0.000	4	AP	101.170/180	0.000
4.5	AP	104.090/100	0.000	4.5	AP	103.270/280	0.000	4.5	AP	103.270/280	0.000
5	AP	106.100/110	0.000	5	AP	105.250/260	0.000	5	AP	105.200/210	0.000
5.5	AP	107.280/290	0.000	5.5	AP	107.030/040	0.000	5.5	AP	107.010/020	0.000
5.5	MY	107.250/260	0.000	5.5	MY	106.260/270	0.000	5.5	MY	106.240/250	0.000
6	AP	108.180/190	0.000	6	AP	107.250/260	0.000	6	AP	107.260/270	0.000
TREASURY BENCHMARKS:			2Y	99.286/292	3Y	99.08+/090	5Y	99.166/172			
			7Y	99.170/174	10Y	98.006/012	30Y	97.262/272			

Data is available within intuitive page displays and in logical record format for use in analytical applications and Excel spreadsheets.

MBS Sector Composite Page

MortgageMarker allows for a more complete view of the TBA market from the vantage point of the primary dealers. The subscriber will have access to prices representative of levels at which dealers are willing to trade with each other.

## MORTGAGEMARKER PROVIDES ESSENTIAL REAL-TIME YIELD CALCULATIONS, INCLUSIVE OF:

- Bond Equivalent Yield (BEY)
- Mortgage (MBS) yield
- Duration (DUR)
- Weighted-average life (WAL)
- Weighted-average maturity (WAM)
- Prepayment assumptions (PSA)
- Benchmarks spread to Treasury
- Interest Rate Swaps